

Connecting to TS1 - Profund

To begin you will need to log on to the TS1 server.

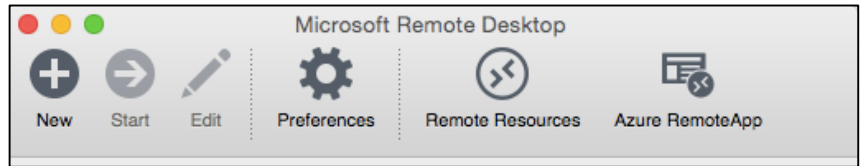
If you are working on a Windows Computer, please skip to Page 3

Click on Microsoft Remote Desktop. The icon should look like this or a little satellite.

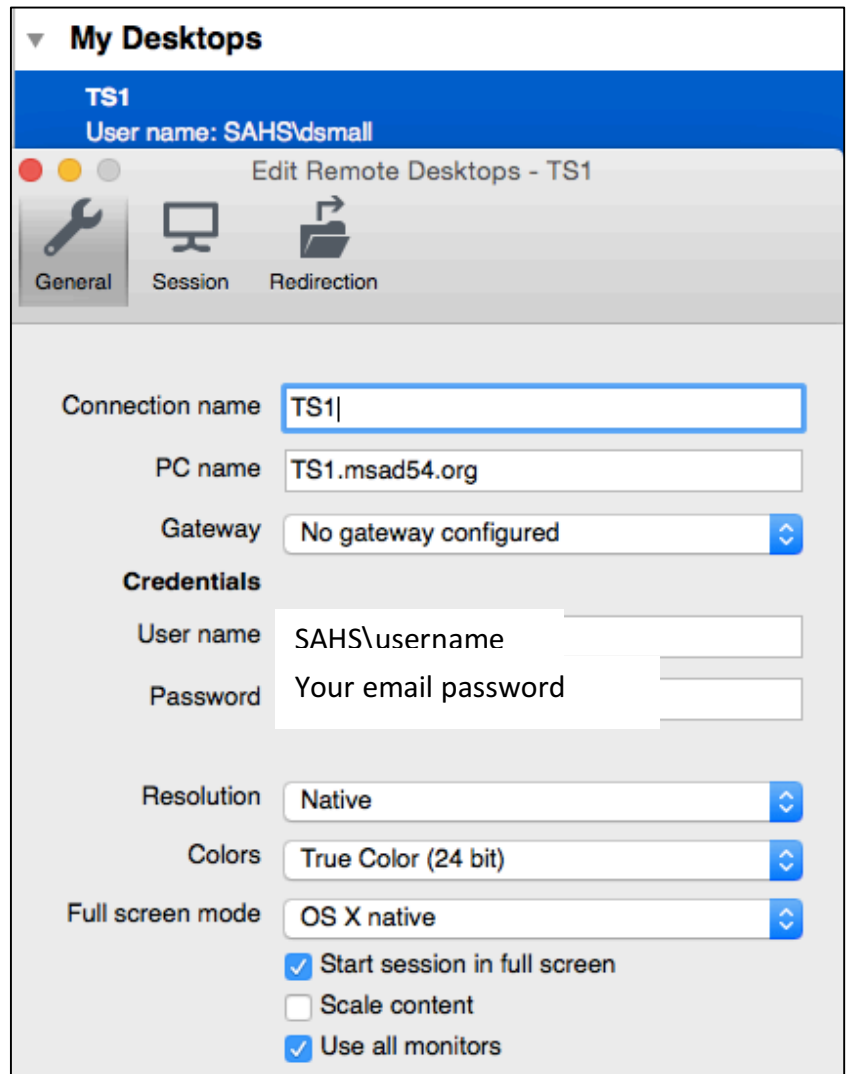


Microsoft Remote Desktop

If you do not have a saved connection click new.

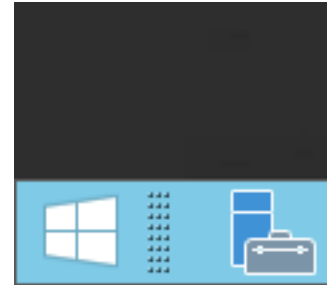


Type in the information as shown on right.



Once you have entered TS1 you are on a Windows8 computer.

To find Profund click on the Start Menu button

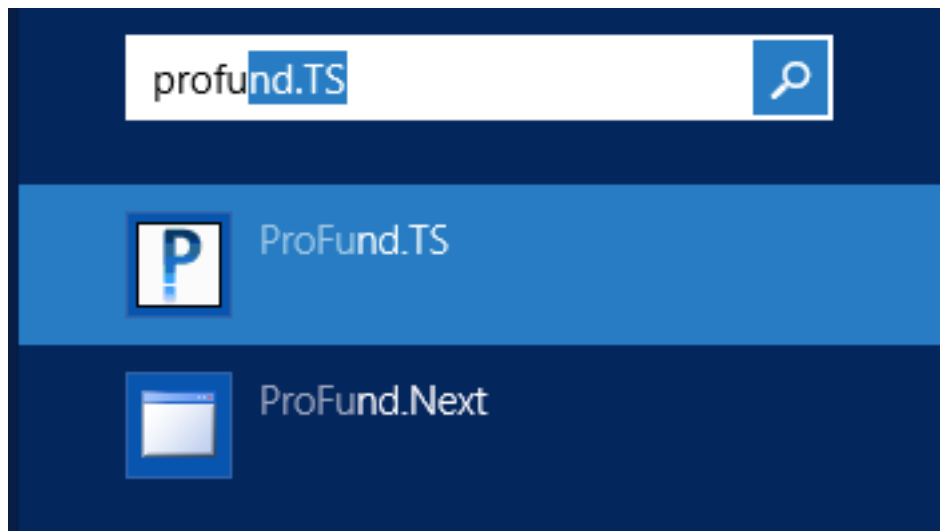


This will bring you to the Windows Desktop

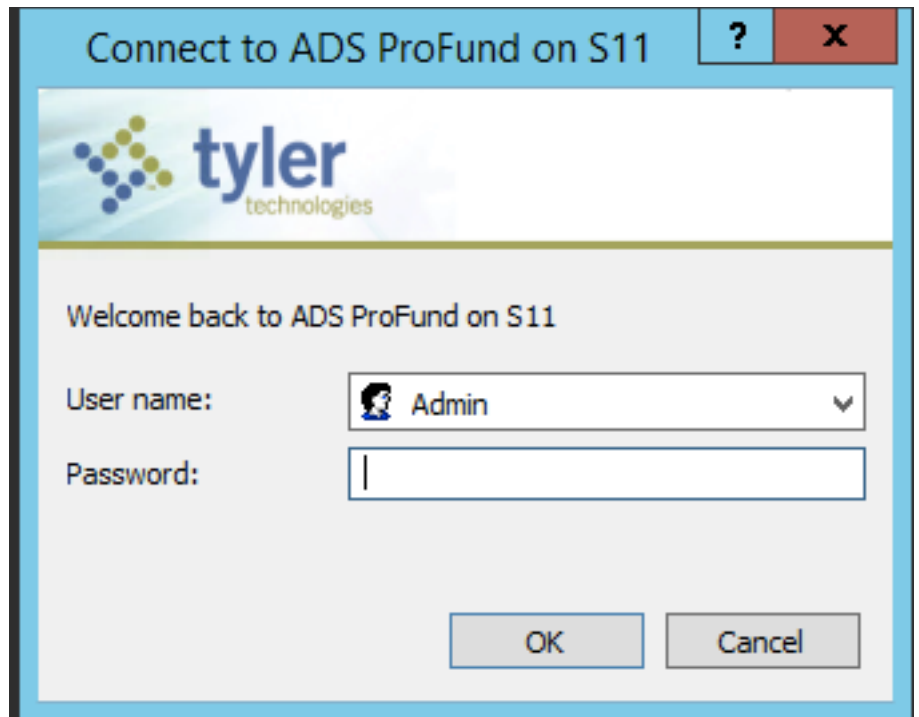
You can use the search box or click anywhere in the blue and start typing Profund

Click ProFund.TS

Click ProFundNext if you are using this for the first time.

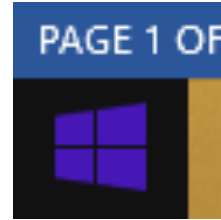


Log into Profund with the credentials given to by your administrator or the Central Office.

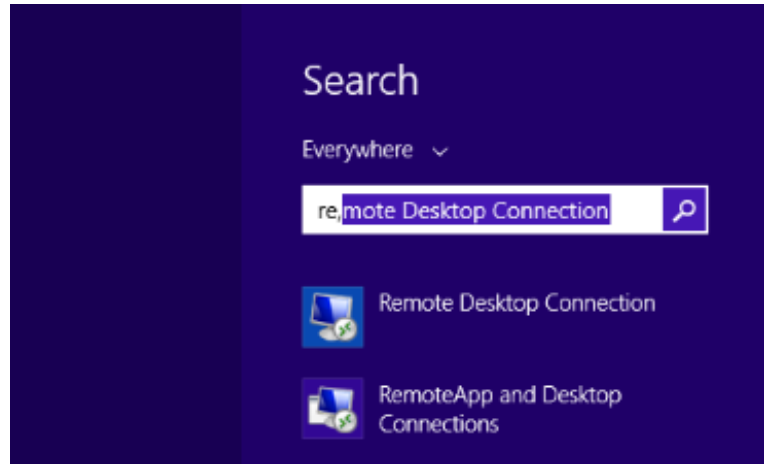


Remote Desktop Connection from a Windows computer

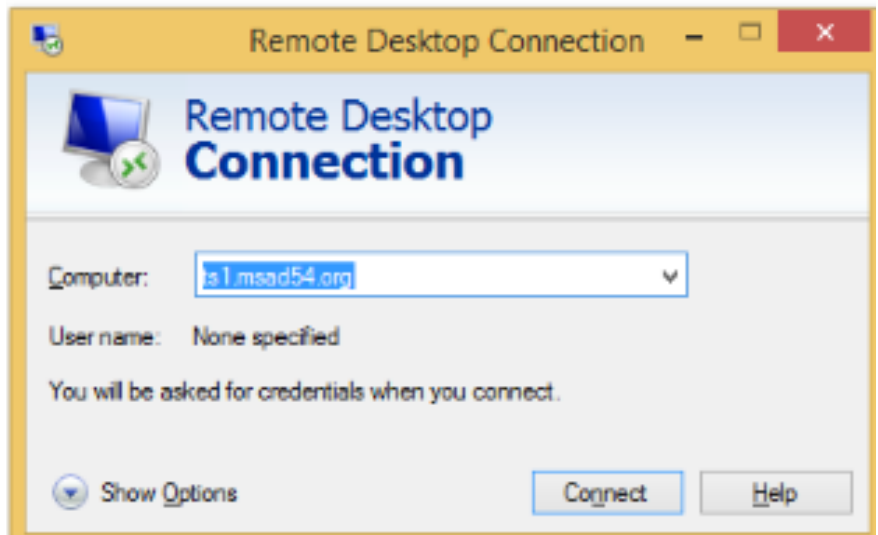
Click on the Start Menu Button



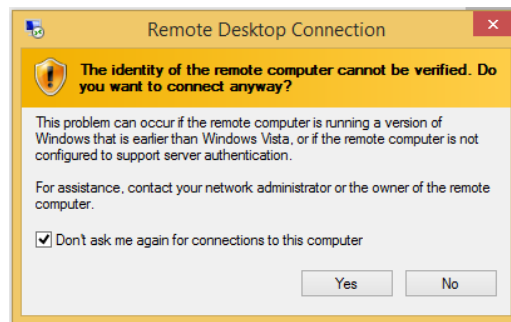
Start typing Remote Desktop Connection



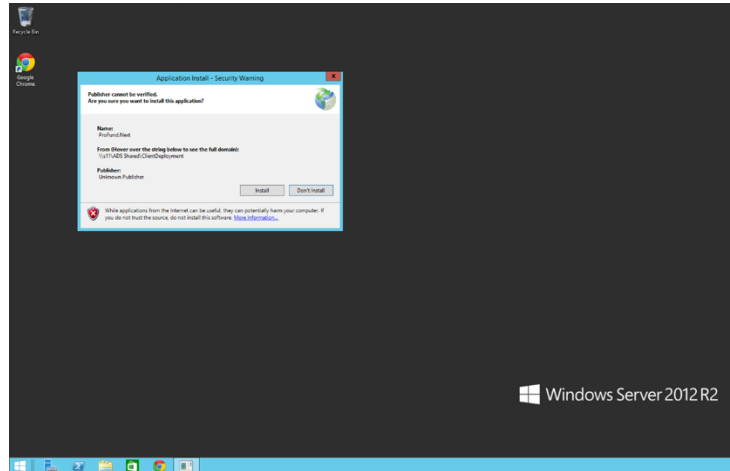
In the Remote Desktop Connection
Type ts1.msad54.org



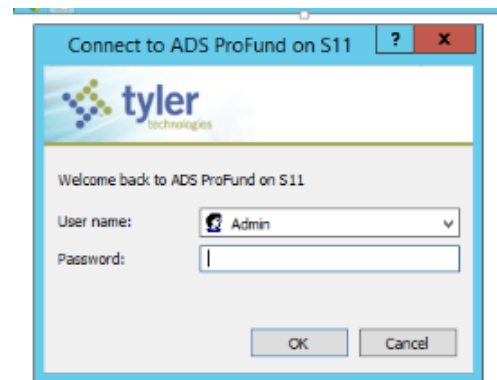
Click Yes to the security window.



If using this for the first time you will be asked to install. Please do this.



Log into Profund with credentials received from your administrator or Central Office.



Follow directions in Requisition Guide below.

<http://www.msad54.org/sahs/TechInteg/Guides-BothPlatforms/Profund-requisitionprocess.pdf>